

- 100% sealed combustion water heater for direct vent applications
- Factory-packaged system with excellent safety features
- Factory prewired for ease of installation

The Therma-Flow Direct Vent Water Heating System features totally sealed combustion with a direct vent kit to assure that all flue gases are exhausted directly to the outside. Each system serves as an extremely durable and dependable source of domestic hot water when converting homes from electric to oil-fired hot water, and for problem chimneys or homes without a chimney.

Due to its special design and precise care in manufacture, this “pre-engineered,” and “pre-packaged” system will provide the best and safest long-term service for production of domestic hot water.

- Exclusive combustion chamber design provides optimum heat transfer.

All Systems Include:

- Quality Therma-Flow 30- or 50-gallon direct vent center flue heater
- Immersion type, dual aquastat control
- Carlin EZ-1 burner with appropriate nozzle; air intake boot
- Z-Flex exhaust connector duct (premeasured length; no guesswork)
- Air vacuum breaker
- Field Controls through-the-wall direct vent hood

Enhanced Safety Features:

- All combustion joints are welded, providing 100%, sealed combustion
- 30-second pre-purge on burner startup
- 5-minute post-purge when demand is satisfied

Factory Pre-Set Installation and Performance Features:

- Factory prewired burner and control kit; burner nozzle is installed
- Prewired immersion type dual aquastat
- Top piping feeds for both hot and cold water fittings
- High density blanket insulation keeps water hot while keeping jacket cool
- Durable glass lined steel tank
- Two corrosion resistant, heavy duty anode rods
- Brass drawoff

Plus:

- All fittings, controls and valves are accessible from the front of the heater.
- A special female adapter accepts the pressure relief valve without a coupling.
- All units are thoroughly inspected prior to shipment.
- All Therma-Flow Direct Vent Water Heaters are made in the USA.

Warranty Information:

5-year warranty for domestic applications\*; 1-year for commercial use

\*Domestic use is defined as a single family or two family dwelling which is used solely as a family's personal domicile; all other considerations will be viewed as a commercial installation.

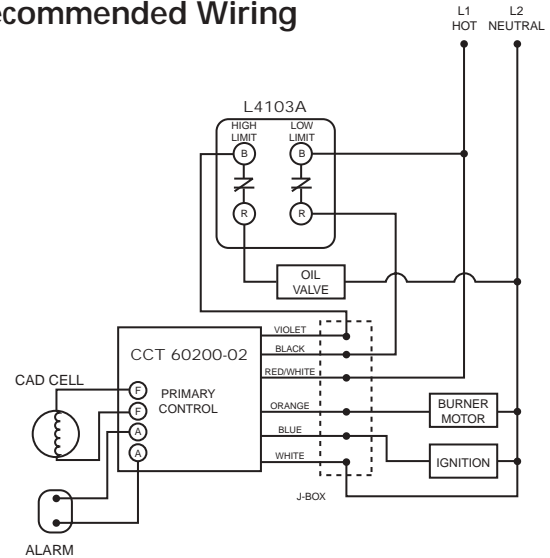


# SPECIFICATIONS: Direct Vent Oil-Fired Water Heating System

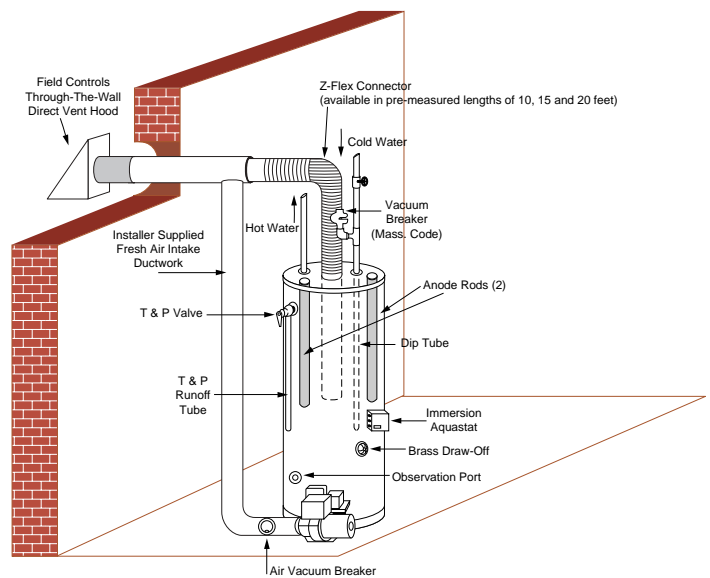
All measurements are in inches and U.S. gallons unless otherwise specified.  
All systems use Therma-Flow direct vent, center flue water heaters.

MODEL	DVS30GL	DVS50GL
STORAGE CAPACITY—GAL	30	50
ROUGHING-IN DIA'S		
DIAMETER	22	24
HEIGHT	48	56
FLUE (FLOOR)	N/A	N/A
H.W. OUTLET (FLOOR)	50	60
C.W. INLET (FLOOR)	50	60
BURNER (FLOOR)	9½	9½
AQUASTAT (FLOOR)	26	20
FLUE COLLAR DIA.	6	6
OUTLETS		
AQUASTAT (FEMALE)	¾	¾
C.W. INLET (MALE)	¾	¾
H.W. OUTLET (MALE)	¾	¾
RELIEF VALVE (FEMALE)	¾	¾
COMBUSTION		
COMBUSTION CHAMBER I.D.	10	12
BURNING OPENING DIA.	4¼	4¼
FIRING RATE: NOZZLE 70° HOLLOW	.65	.85
INSERTION LENGTH	6⅞	6⅞
RECOVERY: GPH, 100°F RISE	104	130
TANK		
TEST PRESSURE	300	300
WORKING PRESSURE	150	150
SHIPPING		
LENGTH	24	24
WIDTH	26	26
HEIGHT	51	60
WEIGHT	275	340

## Recommended Wiring



## Recommended Schematic



Closeup of burner and air intake boot.



PHONE/FAX: 617-924-3877 • FAX: 617-924-7271 • TOLL FREE PHONE: 1-800-654-8045

E-MAIL / WEB SITE: sales@tfi-everhot.com • WEB SITE: www.tfi-everhot.com

FACTORY: Therma-Flow, Inc. • 191 Arlington Street • Watertown, MA 02472 • MAIL: P.O. Box 416 • Watertown, MA 02471-0416